



molex

DATA CENTER CABLING

SCALABLE ENTERPRISE SOLUTIONS

A man in a dark suit and yellow tie stands in the center, holding a white sheet of paper and a pen, presenting to a group of people seated around a table. The background is a modern office setting with a large screen.

TAILORING YOUR DATA CENTER STRATEGY

Our digital world is becoming ever more connected. We use more devices, run increasingly complicated applications, store more information for longer. For organizations to thrive, they must plan for managing both change and resource.

Data center strategy is a core aspect of any IT plan. Data sovereignty, rising numbers of connected devices and our increasing dependence on technology are key issues. Availability and fast access are basic requirements, but with reliable security and controlled costs.

Enterprise, cloud and colocation services all have their own benefits. Increasing numbers of organizations are implementing hybrid solutions that combine the best of each. In order to develop a solution that meets their unique needs, organizations need to first develop an in-depth understanding of their own requirements.

When planning any IT infrastructure, it's essential to plan for the future. But how possible is it to predict what you will need, or what technology will be available, even a few months into the future?

Flexibility is key. Modular and plug-and-play components which are quick to install and move. Better build quality means components which can be reused when alterations are required. Infrastructure that's designed from the outset to enable the future - whatever that looks like.

| CONNECTED ENTERPRISE SOLUTIONS

Molex has been developing connectivity solutions for over 40 years. As one of the pioneers of structured cabling, we have provided solutions to some of the largest organizations around the world.

END-TO-END SOLUTIONS

Trusted by hundreds of organizations worldwide, our range of end-to-end infrastructure products deliver robust, high quality connectivity across your enterprise, delivering fast transmission from the data center to the desk.

GLOBAL REACH

Our local sales, customer service & technical support teams work with alongside a global network of consultants, distributors and Molex-trained installers to ensure you receive the highest quality of service end to end. We are able to draw on this international market intelligence to develop products that meet the needs of tomorrow, today.

QUALITY & RELIABILITY

With exceptional build quality, our products are built to be used and reused. Backed by a 25-year system performance and application assurance warranty*, we are known for the performance and reliability of our products.

**More info: www.molexces.com/about-us/our-warranty*



©Molex, LLC



Our Solutions:

PRODUCT HIGHLIGHTS

OPTICAL FIBER SOLUTION

The Lightband fiber optic solution offers the highest level of speed, bandwidth and security performance, and is ideally suited for deployment in data centers.

Cable is supplied ready to install, minimizing on site installation time. For highly sensitive applications, locking patch cords prevent unauthorized changes. Supports latest data transmission rates up to 400Gbps.

POWERCAT SOLUTION

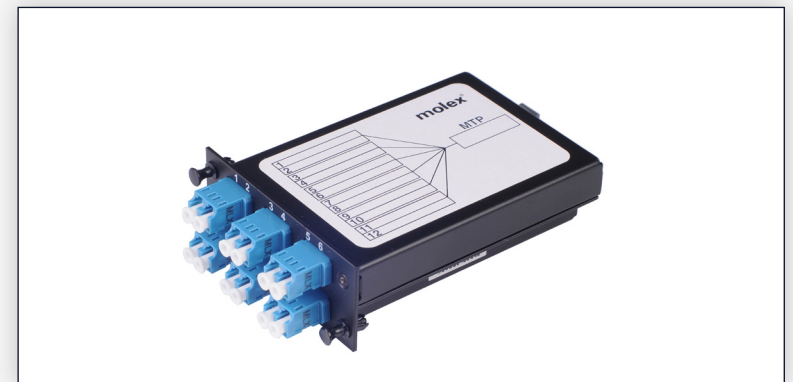
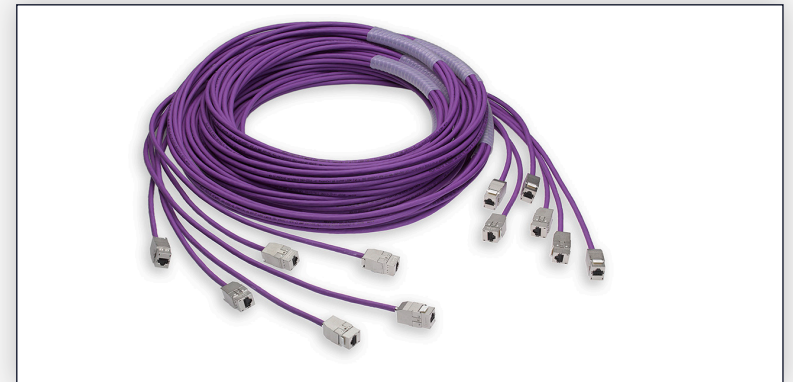
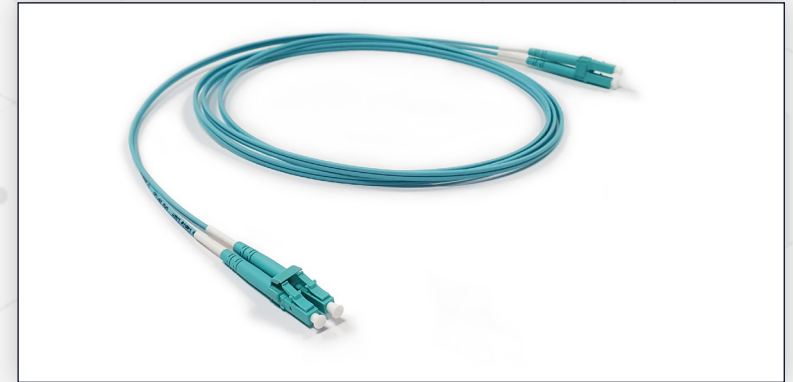
Molex PowerCat 6A is a high performance Category 6A solution that provides superior performance where speed, reliability, or future proofing is required. With exceptional alien crosstalk suppression, insertion loss and EMI immunity characteristics, it is the system of choice for data centers.

Supports 10GBASE-T performance+

MODLINK PLUG & PLAY

The ModLink solution is ideal for mission critical applications where fast installation is required and moves / adds / changes (MACS) are frequent. Self-contained, factory assembled cassettes convert an MTP interface to a choice of other type of connectors.

Cassettes are low loss ready, ideal for up to 400G Ethernet. This solution is modular, flexible and easily configurable.



Our Solutions:

PRODUCT HIGHLIGHTS

MULTIFUNCTION ENCLOSURE

A comprehensive range of rack mount multifunction enclosures for secure management of fibers. These high-quality enclosures are designed to flexibly accommodate high fiber counts in various termination types and adapter configurations.

Compatible with Molex DataGate RJ45 jack adapter plates for multimedia applications.

ANGLED PATCH PANEL

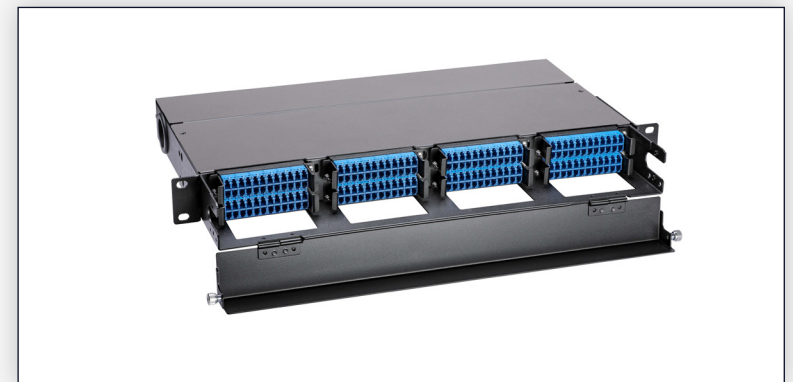
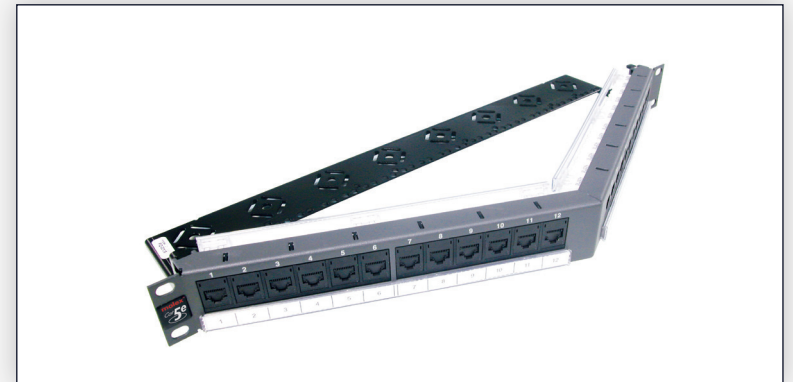
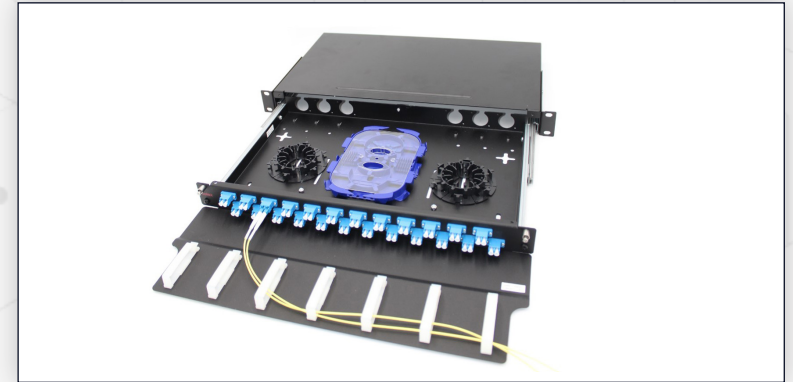
Ideal for high density installations or those which utilize extensive side and end-of-the-rack cable management. The angled feature provides enhanced port access and ensures safe patch cord bend radius.

Constructed of cold-rolled steel for strength and long-term durability.

XTREME DENSITY SYSTEM

The Xtreme Density System is a flexible, extremely high density solution where high performance and quick installation is required.

Durable powder / liquid coated steel construction ensures years of reliable service. Designed for 10G / 25G / 40G / 50G / 100G system migration, 400G-ready.



Our Solutions:

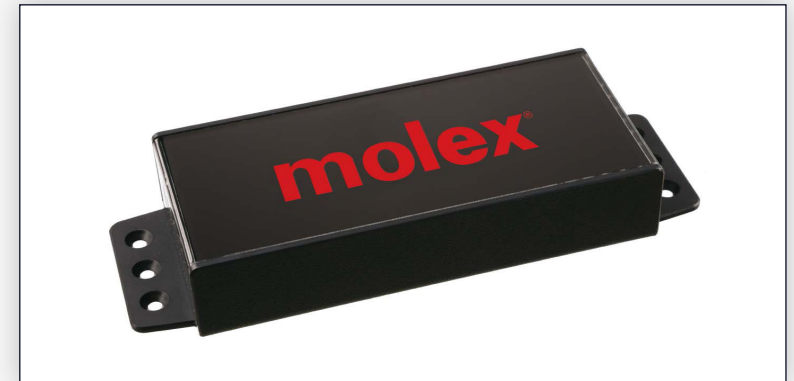
PRODUCT HIGHLIGHTS

CABINET MONITORING SOLUTION*

CIIM is a smart monitoring system for network cabinets. Using a range of sensors, environmental parameters such as temperature, humidity and smoke can be identified and monitored. Errors and potential issues can be detected and flagged early to prevent system breakdowns.

PRODUCT HIGHLIGHTS

- Smart monitoring for your individual requirements
- Observation of a variety of environmental parameters including:
 - Temperature
 - Fire
 - Water
 - Motion
 - Pressure
- Fast error detection with pre-alarms
- Fast, easy configuration
- Ethernet standard communication (100 Base-TX)
- 4 X 12 V inputs for sensors and sabotage detection
- 4 X 12 V outputs for direct connection to a peripheral device
- Access control with a range of locks and handles



**Not available in all regions*

Our Solutions:

PRODUCT HIGHLIGHTS

NETWORK CABINETS*

Molex network cabinets are an ideal solution for data centres and telecommunication rooms. They are specially designed for the storage of IT equipment and high-density network cables.

The product range offers a highly versatile and fully customizable group of cabinets to suit your budget and type of installation. For smaller businesses and locations with limited space, solid-framed wall-mounted network cabinets offer versatility and enable network devices to be installed in a variety of spaces.

A full range of accessories for cable and device management ensures you can keep your equipment well organized.



**Not available in all regions*

CASE STUDY: ORDOS BIG DATA CENTER

Ordos has become one of the most desirable locations in China for building data centres. With a construction area of 40,000 square meters, this was one of the key projects in Ordos city government's "Smart City" strategic plan.

Mr Wang, project manager at construction and operation contractor, Rockontrol, commented:

"We chose Molex for three reasons: "Firstly, Molex products' performance and quality met the project's harsh environmental requirements; Secondly, Molex's capacity and logistic service could meet our tight delivery requirement; and finally, Molex's professional employees could help us navigate all the difficulties in the project.

"After the project was started, Molex also provided enormous help so that we were able to replace the existing underperforming system in less than three months. We kept moving up the structured cabling products' delivery schedule and each time, Molex worked hard to fulfil our requirement; meanwhile, all the pre-terminated fiber cables were packed by rows following the cabinet configurations, which was very convenient for our installation and saved a lot time.

"The successful operation of Ordos Big Data Centre proved that it was absolutely the correct choice to use Molex products."





Dependable Solutions for Demanding Environments

Overcome your connectivity challenges today and capture future opportunity with our flexible, high-performance networking solutions and deep market expertise.

Find your local contact at

molex.com/contact-us

creating connections for life

Molex is a registered trademark of Molex, LLC in the United States of America and may be registered in other countries; all other trademarks listed herein belong to their respective owners. This information is correct at the time of publication, specifications are subject to change.

Order No. Data-Center-Brochure-EN

SK/2025.03

©2025 Molex